

THE ROTARY DOCTORS SWEDEN PROGRAMS IN KENYA
JULY-DEC 2015 ACTIVITY REPORTS



REPORT BY:

DANIEL O. MURUKA

JACINTA K. NICASIO

INTRODUCTION

It is the end of the year 2015, another opportunity to look back and take stock of what we have achieved. Our objective to motivate the community into participating in community related health issues, increase community health knowledge to adopt positive health seeking behaviour change, thus a healthy and productive community.

The volunteer doctors from Sweden, Netherlands, Finland, etc. reach out to patients, in very remote villages; with bad roads through a relay know as the jeepline, offering curative, promotive and preventive services under remote circumstances with the cooperation of the community and the government.

The team composed of RDS volunteer doctors, local nurses, laboratory technicians, pharmacists gives an opportunity to someone who would have had to walk for more than 5-8km seeking for medical help if the jeepline would not be there. The burden of poverty weighing heavily on the sick, at the end of the 5-8km walk, the services would either have been very expensive or all the drugs prescribed would have been out of stock.

As we look back, our curative services have reached out to so many patients, both children and adults, the immunization, antenatal care and family planning services have also been accessed by so many clients. In our effort to promote positive health behaviour change, our team has increased health education to both

the patients and the volunteers as a way of health information dissemination.

We have also achieved a great deal by availing clean drinking water to the community by spring protections and sinking of shallow wells, and on malaria prevention through the provision of mosquito nets. Our anti jiggers campaign has also reached out to many affected children and adults.

All these activities have been made possible by donations from various Rotary Clubs, other organizations and well wishers. We appreciate your effort and our promise is to use your contribution to reach out to that common man in the village.

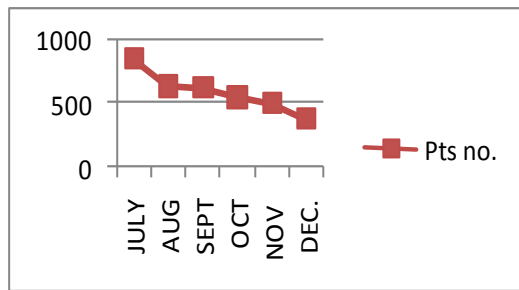
Thanks to all the volunteer doctors who have served in this period, just take a minute and look back to your period as a jeep doctor! You were there for that patient, client! Rotary Saves life! You did!

PATIENTS TURN UP PER JEEPLINE

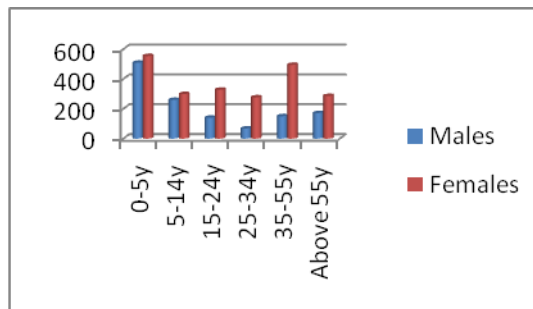
1. MATUNGU JEEPLINE

NO	AGE GROUP	GENDER	JULY	AUG	SEPT	OCT	NOV	DEC	TOTALS
1	0-5YEARS	MALE	137	89	75	65	73	70	509
		FEMALE	131	106	94	71	92	60	554
2	5-14YEARS	MALE	73	47	50	39	26	25	260
		FEMALE	93	63	37	40	40	26	299
3	14-24YEARS	MALE	37	23	19	29	14	18	140
		FEMALE	69	61	60	52	44	42	328
4	25-34YEARS	MALE	15	14	12	11	7	9	68
		FEMALE	60	48	59	45	40	25	277
5	35-55YEARS	MALE	35	17	34	26	25	13	150
		FEMALE	102	96	100	79	69	49	495
6	ABOVE 55YEARS	MALE	38	24	29	38	31	11	171
		FEMALE	57	45	50	53	46	35	286
TOTAL PATIENTS			847	633	619	548	507	383	3537

MONTHLY PATIENTS DISTRIBUTION.

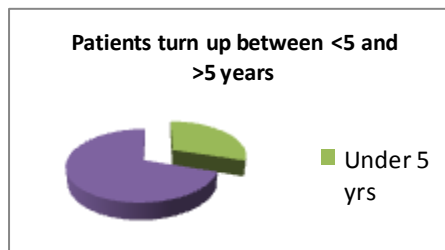
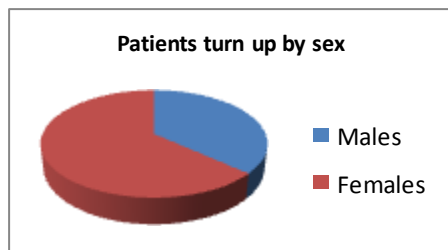


PATIENTS DISTRIBUTION BY AGE GROUP



COMMENTS

- More patients seen in July while few seen in the month of December.
- More patients are seen between the group of 0-5 years and 35-55 years and more females than males seen throughout the different age group.



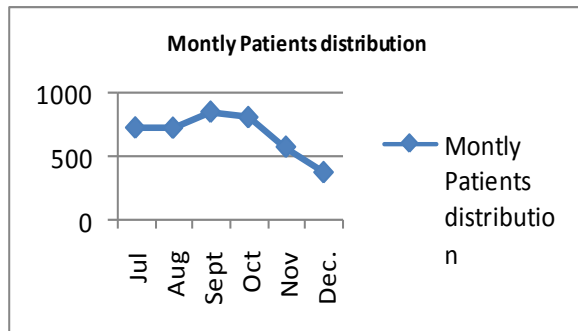
COMMENTS

- More female patients seen in our jeepline clinics than males. In curative services more than a half of the patients seen are above 5 years of age.

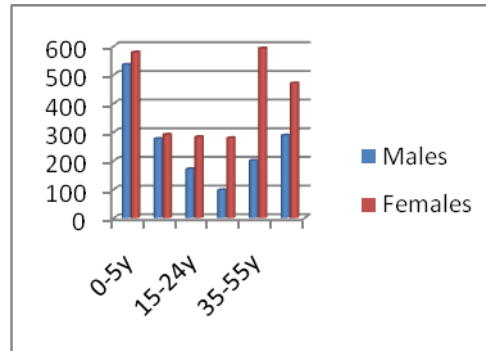
2. MUMIAS JEEPLINE

	AGE GROUP	GENDER	JULY	AUG	SEPT	OCT	NOV	DEC	TOTALS
1	0-5YEARS	MALE	115	100	94	95	77	54	535
		FEMALE	119	123	116	99	72	49	578
2	5-14YEARS	MALE	38	58	62	53	38	27	276
		FEMALE	42	65	57	51	38	38	291
3	14-24YEARS	MALE	43	15	42	28	28	15	171
		FEMALE	62	49	72	40	39	21	283
4	25-34YEARS	MALE	14	21	20	30	7	5	97
		FEMALE	40	52	56	66	44	21	279
5	35-55YEARS	MALE	32	32	36	49	33	18	200
		FEMALE	88	95	130	153	75	51	592
6	ABOVE 55YEARS	MALE	50	41	71	50	49	27	288
		FEMALE	83	73	93	93	76	52	470
TOTAL PATIENTS			726	724	849	807	576	378	4060

MONTHLY PATIENTS DISTRIBUTION.

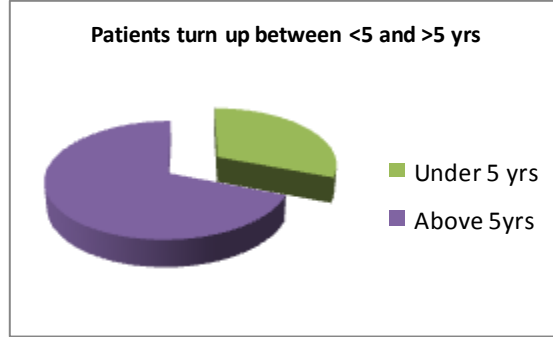
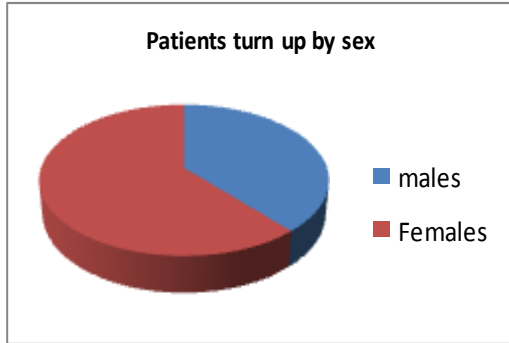


PATIENTS DISTRIBUTION BY AGE GROUP



COMMENTS

- More patients seen in the months of September and October, low number of patients seen in December. The program takes about 10 days December off.
- More females patients seen throughout the different age groups, while more patients seen in the age group between 0-5 years and 35 -55 years.



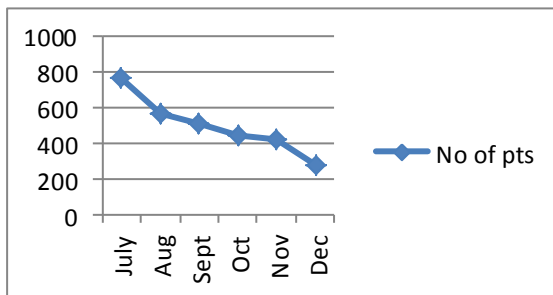
COMMENTS

- More females than male patients seen in the jeepline clinics. More patients above 5 years seen in the Mumias jeepline clinics than the under five years.

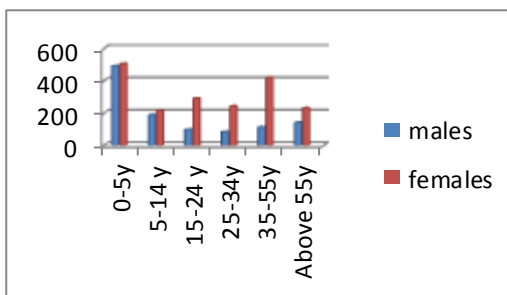
3. ENDEBES JEEPLINE

NO	AGE GROUP	GENDER	JULY	AUG	SEPT	OCT	NOV	DEC	TOTALS
1	0-5YEARS	MALE	141	95	72	73	66	43	490
		FEMALE	134	96	79	84	67	44	504
2	5-14YEARS	MALE	49	30	51	20	24	13	187
		FEMALE	55	52	38	32	21	16	214
3	14-24YEARS	MALE	31	17	14	9	13	13	97
		FEMALE	64	59	45	41	48	32	289
4	25-34YEARS	MALE	19	21	21	12	8	2	83
		FEMALE	54	35	36	36	46	35	242
5	35-55YEARS	MALE	26	26	22	13	19	5	111
		FEMALE	91	73	81	66	64	44	419
6	ABOVE 55YEARS	MALE	38	28	24	18	19	13	140
		FEMALE	65	40	36	42	30	17	230
TOTAL PATIENTS			767	572	519	446	425	277	3006

MONTHLY PATIENTS DISTRIBUTION.

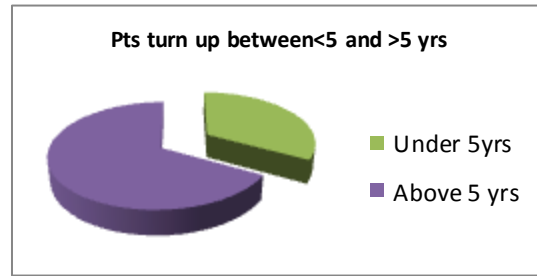
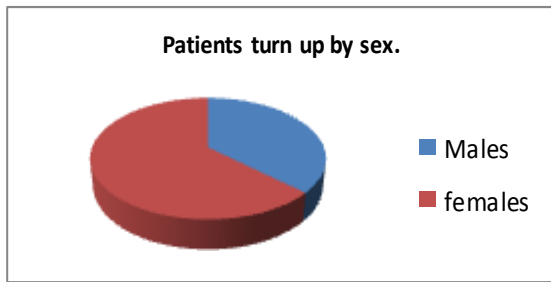


PATIENTS DISTRIBUTION BY AGE GROUP



COMENTS

- More patients seen in July with a steady decrease up to December. More females seen throughout the different age groups. More patients seen in the age group between 0-5 years and 35-55 years.



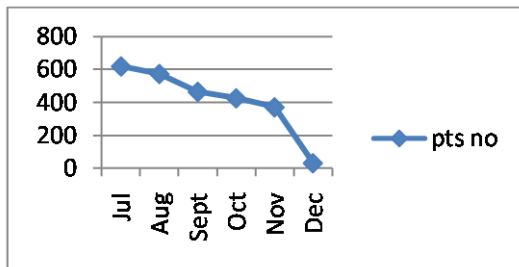
COMMENTS

- More female patients seen in Endeless jeepline clinics than males. More above patients are also seen as patients than under five years.

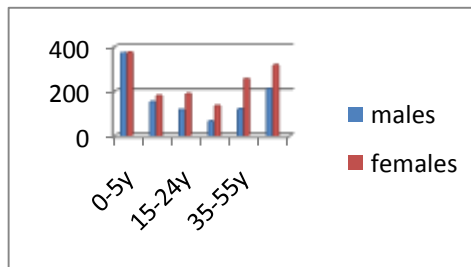
4. UGUNJA JEEPLINE

	AGE GROUP	GENDER	JULY	AUG	SEPT	OCT	NOV	DEC	TOTALS
1	0-5YEARS	MALE	121	79	49	59	58	5	371
		FEMALE	97	98	48	60	64	7	374
2	5-14YEARS	MALE	47	35	25	21	23	1	152
		FEMALE	56	42	29	31	19	2	179
3	14-24YEARS	MALE	26	46	17	18	8	1	116
		FEMALE	42	47	47	32	16	4	188
4	25-34YEARS	MALE	13	20	9	12	11	0	65
		FEMALE	27	27	25	28	25	2	134
5	35-55YEARS	MALE	17	41	19	25	18	0	120
		FEMALE	72	36	70	37	36	3	254
6	ABOVE 55YEARS	MALE	41	50	42	37	39	1	210
		FEMALE	60	52	84	65	53	3	317
TOTAL PATIENTS			619	573	464	425	370	29	2480

MONTHLY PATIENTS DISTRIBUTION.

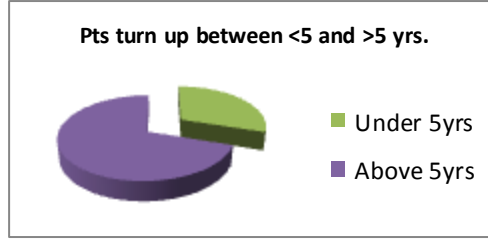
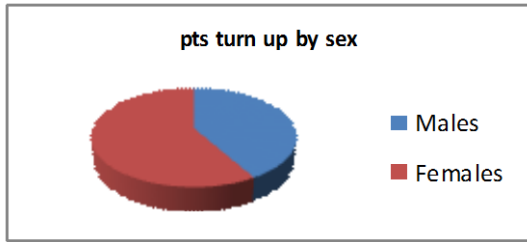


PATIENTS DISTRIBUTION BY AGE GROUP



COMMENTS

- July had the highest patients turn up while December had the least turn up. More patients were seen in the age group of 0-5 years followed by above 55 years. Few patients seen in the age group of between 25-34 years.



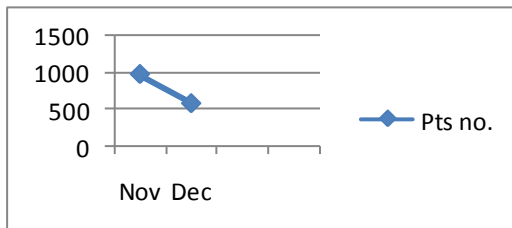
COMMENTS

- Almost an equal number of both males and female seen in Ugunja jeepline clinics, while majority of patients seen are the above 5 years patients.

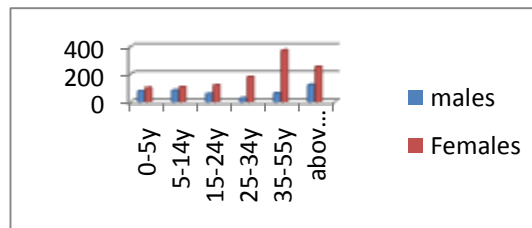
5. KWANZA JEEPLINE

NO	AGE GROUP	GENDER	NOV	DEC	TOTALS
1	0-5YEARS	MALE	56	22	78
		FEMALE	68	33	101
2	5-14YEARS	MALE	45	38	83
		FEMALE	66	41	107
3	14-24YEARS	MALE	32	26	58
		FEMALE	84	36	120
4	25-34YEARS	MALE	18	9	27
		FEMALE	102	79	181
5	35-55YEARS	MALE	45	17	62
		FEMALE	222	150	372
6	ABOVE 55YEARS	MALE	84	39	123
		FEMALE	160	94	254
TOTAL PATIENTS			982	584	1566

MONTHLY PATIENTS DISTRIBUTION.

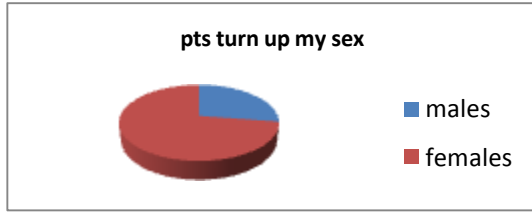


PATIENTS DISTRIBUTION BY AGE GROUP



COMMENTS

- Kwanza jeepline was only operational for two months last year. It was initiated in November last year with two doctors manning the jeepline.
- There are older patients in this jeepline than the under five. Most of the patients visiting the jeepline are age group between 35 - 55 and above 55 years. Unlike the other jeepline very few under five years.
- More needs to be done to mobilize the under five for immunization which is also low.



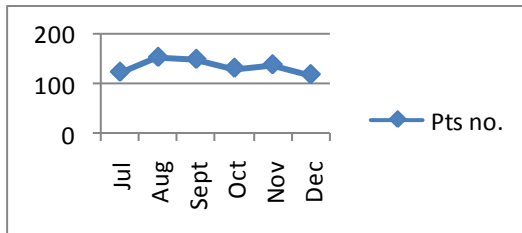
COMMENTS

- Three quarters of the patients seen are females while very few under five seen as patients in the jeepline.

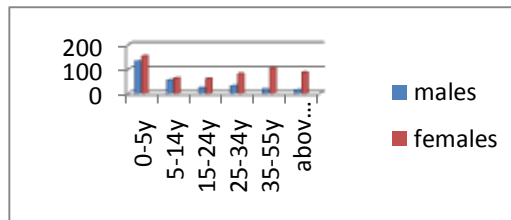
6. KISIMA JEEPLINE.

NO	AGE GROUP	GENDER	JULY	AUG	SEPT	OCT	NOV	DEC	TOTALS
1	0-5YEARS	MALE	23	22	23	26	22	15	131
		FEMALE	24	36	24	23	25	21	153
2	5-14YEARS	MALE	12	11	9	5	7	10	54
		FEMALE	7	13	11	9	10	12	62
3	14-24YEARS	MALE	2	5	7	2	1	5	22
		FEMALE	4	9	8	11	12	16	60
4	25-34YEARS	MALE	3	5	7	4	7	4	30
		FEMALE	16	12	14	12	18	9	81
5	35-55YEARS	MALE	2	3	5	2	1	3	16
		FEMALE	16	18	22	19	19	10	104
6	ABOVE 55YEARS	MALE	1	2	4	2	2	2	13
		FEMALE	13	17	15	16	14	11	86
TOTAL PATIENTS			123	153	149	131	138	118	812

MONTHLY PATIENTS DISTRIBUTION.

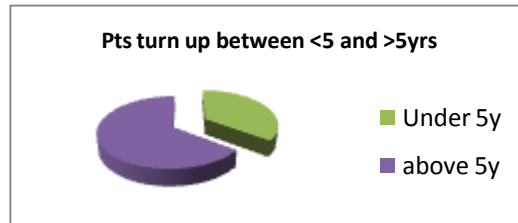
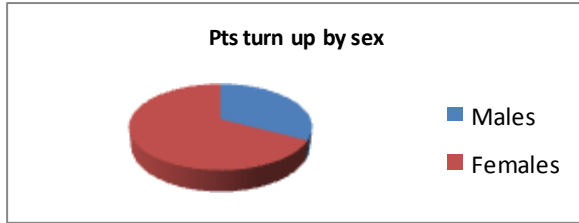


PATIENTS DISTRIBUTION BY AGE GROUP



COMMENTS

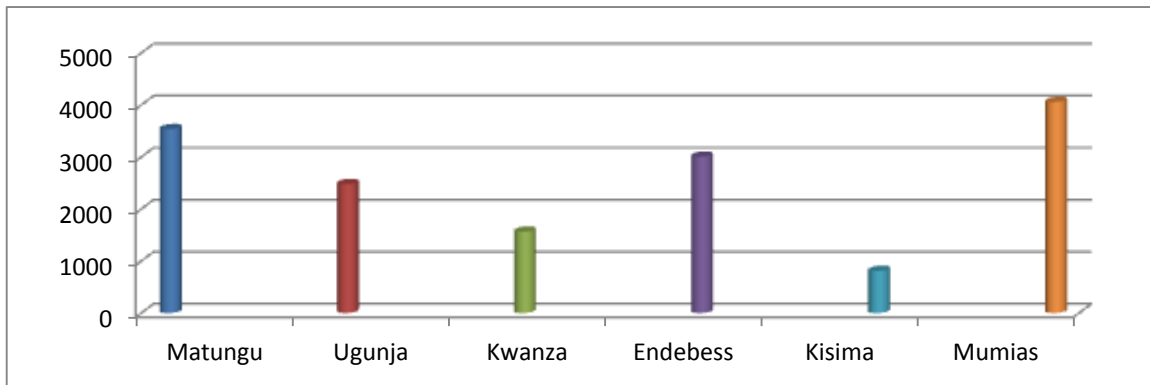
- More patients seen in August and September, more patients seen in the age group of 0-5 years and between 35-55 years.



COMMENTS

- As usual more females seen and more above five years patients seen.

GRAPH SHOWING JEEPLINES TOTAL PTS TURN UP IN SIX MONTHS



COMMENTS

- Mumias jeepline had the most patients followed by Matungu jeepline. Both are stationed in Mumias town.
- Kwanza jeepline had the second least patients, it only operated for two months this year, Kisima jeepline had the least number of patients.

DISEASES BY JEEPLINE

	CASES	MUMIAS	KWANZA	MATUNGU	KISIMA	UGUNJA	ENDEBESS
1	CONFIRMED MALARIA	992	26	588	-	822	134
2	CLINICAL MALARIA	119	11	101	3	6	11
3	PNEUMONIA	213	0	59	13	15	18
4	DIARRHEAL DISEASES	146	12	193	11	23	119
5	SKIN DISEASES/WOUNDS	899	160	885	34	368	530
6	VIRAL INFECTION	247	240	336	64	332	674
7	ANAEMIA	132	121	194		109	162
8	EYE INFECTION	197	60	116	24	95	193
9	EAR INFECTION	193	92	199	12	189	172
10	ASTHMA	146	176	167	135	68	188
11	DIABETIS	130	132	167	127	134	230
12	HYPERTENSION	297	134	187	126	78	320
13	GENERAL BODY ACHES	567	637	444	267	337	678
14	ALL OTHER CASES	824	376	739	87	523	570
	TOTAL CASES	5102	2177	4375	903	3099	3999
	TOTAL PATS	4060	1566	3537	812	2480	3006
	CASE PER PATIENT	1.25	1.39	1.23	1.11	1.24	1.33

COMMENTS

- More confirmed malaria cases in Mumias jeepline and Ugunja, less malaria in Kwanza and Endebess, no malaria in Kisima.

TOP FIVE PER JEEPLINE.

	MUMIAS	KWANZA	MATUNGU	KISIMA	UGUNJA	ENDEBESS
1	MALARIA	G BP	SKIN D/W	GBP	MALARIA	GBP
2	SKIN D/W	VIRAL INFECTION	MALARIA	ASTHMA	SKIN D/W	VIRAL INFECTION
3	GENERAL BODY PAINS	ASTHMA	GBP	DAIBETIS	GBP	SKIN D/W
4	HYPERTENSION	SKIN D/W	VIRAL INFECTION	HYPERTENSION	VIRAL INFECTION	HYPERTENSION
5	VIRAL INFECTION	HYPERTENSION	EAR INFECTION	VIRAL INFECTION	EAR INFECTION	DIABETICS

KEY: SKIN D/W = Skin Diseases/Wounds. GBP = General Body Pain

COMMENTS

- Malaria leads in Mumias and Ugunja jeeplines, these two jeeplines use Rapid Diagnostic Tests (RDT) for testing malaria.
- General Body Pains leads in three jeeplines Kwanza, Kisima and Endebess.

MALARIA TESTS

		MUMIAS	KWANZA	UGUNJA	MATUNGU	ENDEBES	TOTAL
TOTAL TESTED		2015	171	1419	1560	392	5557
TOTAL MALARIA TESTS POSITIVE BY AGE GROUP,SEX AND JEEPLINE							
0-5YEARS	MALE	274	2	233	172	21	702
	FEMALE	285	4	185	189	19	680
5-14YEARS	MALES	115	1	80	66	18	280
	FEMALES	99	9	77	78	13	276
14-25YEARS	MALES	36	0	21	16	9	82
	FEMALES	36	2	51	32	11	132
25-35YEARS	MALES	10	2	7	1	1	19
	FEMALES	36	1	33	8	2	80
35-55YEARS	MALES	15	0	6	6	1	28
	FEMALES	41	4	28	10	2	85
ABOVE 55YEARS	MALES	14	0	6	2	0	22
	FEMALES	31	1	13	3	0	48
TOTALS		992	26	740	583	97	2434
%+ve		49.231%	15.2%	52.149%	37.372%	24.745%	43.801%
Test method		Parachek	B/S	Parachek	B/S	B/S	

COMMENTS

- Ugunja leads in Malaria Positivity at 52.2% followed by Mumias jeepline at 49.2%. In both jeepline the testing method is by Rapid Diagnostic Test (RDT)
- Endebess and Kwanza have the lowest malaria positivity rate. Matungu, Endebess and Kwanza the malaria testing is by microscopy.

HIV TESTING

	GENDER	MATUNGU	MUMIAS	UGUNJA	ENDEBESS	KWANZA	TOTAL +VE
TOTAL TESTED		121	63	174	533	103	994
0-5	M	0	0	0	0	0	0
	F	0	0	0	0	0	0
5-1	M	0	0	1	1	0	2
	F	0	0	0	0	0	0
14-2	M	0	0	0	0	0	0
	F	2	0	3	2	1	8
25-3	M	0	0	0	0	0	0
	F	0	1	5	3	2	11
35-5	M	1	1	0	0	2	4
	F	0	4	5	3	2	14
ABOVE 55	M	2	2	1	0	1	6
	F	0	4	0	1	0	5
TOTAL +VE		5	12	15	10	8	50
%VE		4.132%	19.048%	8.621%	1.876%	7.767%	5.030%

COMMENTS.

- High positivity rate in Mumias followed by Ugunja, Kwanza and Matungu.
- There have been some challenges with the test kits, supply is not regular and frequent changes of the testing algorithm.

OTHER PREVENTIVE SERVICES SUPPORTED BY RDS IN COLABARATION WITH THE GOK.

IMMUNIZATION

IMMUNIZATION	BCG	POLIO			PENTAVALENT			MEASLES	FIC	
		B	1	2	3	1	2			3
KWANZA	16	5	16	20	19	18	21	23	17	17
UGUNJA	9	8	43	49	61	53	49	61	70	70
KISIMA										
MUMIAS	0	3	49	121	97	49	121	99	52	40
MATUNGU	20	27	129	160	161	134	161	158	223	205
ENDEBES	319	41	332	380	385	368	403	380	378	378
TOTALS	364	84	569	730	723	622	755	721	740	710

FIC – fully immunized child

COMMENTS

- High Immunization in Endebess and Matungu, very low immunizations in Kwanza jeepline, we are planning a stakeholders meeting to discuss this.

1. ANTENATAL CLINICS

ANTENATAL CLINICS	JEEPLINE	1ST VISITS	2ND VISITS	3RD VISITS	ABOVE 4TH VISITS
	KWANZA	16	12	10	6
UGUNJA	34	54	42	26	
KISIMA	32	43	25	13	
MUMIAS	14	31	25	33	
MATUNGU	75	103	80	65	
ENDEBESS	274	238	149	113	
TOTALS	445	481	331	256	

COMMENTS

- Endebess jeepline leads in antenatal clinics services utilization followed by Matungu jeepline, the least attended is Kwanza jeepline. It is also important to note that Kwanza lasted only two months.

2. FAMILY PLANNING SERVICES

FAMILY PLANNING	JEEPLINE	DEPO	PILLS	IMPLANTS	STERILIZATION
	KWANZA	48	7	35	0
UGUNJA	66	0	32	0	
KISIMA	66	25	76	0	
MUMIAS	170	21	6	0	
MATUNGU	544	0	9	0	
ENDEBES	1140	86	238	0	
TOTALS	2034	139	396	0	

COMMENTS

- Endebess is also leading in utilization of family planning services, the method of choice is depo provera followed by implants. Matungu jeepline is second.

3. MALARIA PREVENTION BY USE OF MTNs

NETS	JEEPLINE	ANTI NATAL CARE	PATIENTS NETS	SOLD NETS	CHILD WELFARE CLINIC NETS
	KWANZA	0	1	6	0
UGUNJA	44	39	0	12	
KISIMA	-	-	-	-	
MUMIAS	62	19	113	95	
MATUNGU	81	14	224	60	
ENDEBESS	20	17	0	23	
TOTALS	207	90	343	190	

SPECIAL PROJECTS.

- Apart from the mobile clinics, some of the activities of the RDS includes: Spring protections, shallow wells sinking, jiggers eradication CHWs trainings and support.

	PROJECT	NO	NO. H/H	OBJECTIVES
1	SPRING PROTECTION	6 spring	1,019	<ul style="list-style-type: none">- Provide clean drinking water to the community.- Reduce time and other resources needed to clean water.- Mobilize the community to take good care of community water sources.
2	SHALLOW WELLS	1 shallow well	250	<ul style="list-style-type: none">- Reduce time and resources needed for water treatment.- Mobilize the community to own and take care of the community water sources.- Provide clean water to the community within reach.

JIGGERS ERADICATION.

<i>JEEPLINE</i>	<i>NUMBER TREATED</i>	<i>SCHOOL RX</i>	<i>HOUSEHOLD SPRAYING.</i>	<i>NUMBER GETTING SHOES</i>
UGUNJA	134	3	14	-
MUMIAS	234	-	26	156
MATUNGU	212	-	21	-
ENDEBESS	98	-	-	-
KWANZA	-	-	-	-

CHWS TRAINING AND SUPORT

- None this period.

RDS ACHIEVEMENT DURING THE 2ND PART OF THE YEAR.

1. CLINICS HANDED OVER TO THE GOK AND THE COMMUNITY.

- Handing over of Wang Yang clinic and Ebukoolo clinics to the community in cooperation with health authorities of the Government of Kenya. New health dispensaries have now been opened with permanent staff.

2. ESTABLISHMENT OF A NEW JEEPLINE.

- With successful consultation with the Director of Medical Services Trans Zoia County, and with cooperation of the Kwanza Sub County Health Management team we were able to successfully initiate Kwanza jeepline.

3. ONE MORE JEEP.

- Through donations by Marten Werner Funds, the program received a new car for the Kwanza jeepline. The car a Nissan is well adopted to cross the rough terrains and reach the different RDS clinics in the Kwanza Jeepline.

4. SUPPORTING THE BUILDING OF THE NURSE HOUSE IN SIKWADHI.

- In line with our objective of smooth exit of our services in Homa Bay the RDS through Dr. Margareta raised funds to build a living quarter for a nurse in Sikwadhi. The health service can now continue since the Homa Bay government is financing the nurse in the area when the issue of accommodation has been solved.

5. DOCTORS MEETINGS.

- Once during each six week period a meeting is held with the doctors and team leaders for each jeepline together with the coordinators. These have been great meetings, the teams come together for the project review, consultations, sharing views and developing solutions together to address the identified problems.

6. PROVISION OF CLEAN WATER TO THE COMMUNITIES.

- Wow! Both the spring protection and the shallow well sinking have enabled more than 1,269 households' access clean drinking water. On average each household having 5 people, in some areas the springs are used by schools too.

7. VISIT BY THE RDS COORDINATOR – KARIN HAKANSSON.

- This is always a great time, not just to read the reports, but to witness what has happened, a time to look, discuss, agree, make plans and start implementation process.

8. CONTINUOUS MEDICAL EDUCATION TO STAFFS.

- This is a program that gives doctors opportunity to share together with the team; the team identifies different topics to discuss together with the doctors. This makes our medical team very knowledgeable.

9. VOLUNTEERS EDUCATION.

- In this program, the doctor shares medical knowledge with the local health committees who are also volunteers, with this knowledge the volunteers becomes agent of community health behaviour change.

CHALLENGES.

- The challenges can be best summed as bad economic times, the emergence of patients seeking treatment for non-communicable diseases in a poor community with very limited opportunities to manage these.

PLANS FOR JAN – JUNE 2016.

1. **UGUNJA JEEPLINE EXIT** – This should be by end of April 29th 2016.
2. **START NCDs PROGRAM** – Training of the staff, acquiring necessary materials and start in Kwanza jeepline by March 2016.
3. **REACH OUT TO MORE HOUSEHOLDS WITH CLEAN WATER.** – Mobilize more support for spring protection and shallow wells sinking to reach more than 3,000 households.
4. **INCREASE HEALTH EDUCATION TO STAFFS AND VOLUNTEERS.** – Continuous CMEs at the doctor's house and at the dispensary levels.
5. **INCREASE IMMUNIZATION COVERAGE IN KWANZA JEEPLINE.** - Meet with stakeholders in Kwanza for consultation and mobilization planning.
6. **INCREASE JIGGERS ERADICATION.** - Reach out to more children with jiggers infestation and anchor the jiggers eradication program alongside the jeepline clinics.

ABBREVIATIONS/SIGNS/SYMBOLS AS USED IN THE REPORT.

BCG = Bacille Calmette Guerin.

BS = Blood Slide for Malaria parasites.

DEPO = Depo provera method of family planning.

DR. = Doctor.

FIC = Fully Immunized Child.

GBP = General Body Pains.

GOK = Government of Kenya

H/H = House Hold.

LAB. = Laboratory

TMNs = Treated Mosquito Nets

NO. = Number

O/S = Out of Stock

PTS = Patients

RDS = Rotary Doctors Sweden

RDT = Rapid Diagnostic Test.

+VE = Positive

-VE = Negative

>5 = Above 5 years

<5 = Under 5 years.