

THE ROTARY DOCTORS SWEDEN

ACTIVITY REPORT in Kenya



(When the car can no longer take it, the community becomes handy – North Pokot Kasei)

JULY-DEC 2018

By Rotary Doctors Sweden´s partner

Community Nursing Services

Kenya

INTRODUCTION

The Rotary Doctors Sweden (RDS) a humanitarian organization in partnership with Community Nursing Services (CNS) have been actively involved in community health programs in Kenya. Our activity areas has been Trans Nzoia County where we cover both Endebess and Kwanza Sub Counties, Kakamega County covering Mumias East and Matungu Sub Location, Kitui Mutomo hospital and North Pokot Sub County in West Pokot County.

The projects activities involve, mobile outreach programs in hard to reach areas in the community where we cooperate with the Sub County Health Management Team to offer services such as curative, family planning, immunization, antenatal and post natal services. We also give health education to the general public at the clinics and education to the health volunteers at the clinics. At school we offer free dental services to school children where we carry out screening and treatment. Community sanitation is also one of our key target areas where we capacity build the community in terms of accessibility to clean water by spring protection or shallow well sinking, we promote community led total sanitation and training of community health workers. Ours is a mission to reach out to the rural community where there is great need.

We have had a busy end of 2018, Mumias jeepline was exited at the end of the year,

health workers in the exit facilities were trained especially on Non Communicable Diseases and capacity built with medical supplies. The CHVs were also trained on varies topics regarding management and community health issues. Some clinics were taken over by the sub county health management team, while other clinics were linked to existing health facilities.

It has been a great pleasure working volunteers from the community, clinic health committees and the Sub County health management team. The achievements this year would not have been reached if not everybody had made a contribution, this especially been done by your community, your people, sisters and brothers, sons and daughters, we stood out for you and gave you a hand – you did the work. Thank you so much.

To our partner, the RDS, what a great honor that you choose to work with us, and especially in those hard to reach areas, where you braved the bad roads, muddy during rains and hot climates just to stand out for someone in Africa. To all our volunteer doctors and dentists this period thank you so much. To the board of Rotary Doctors Sweden, through the board chairperson Dr. Margareta Wargelius thanks for all the work as a jeepline doctor and also as the leader of the team that makes all this happen.

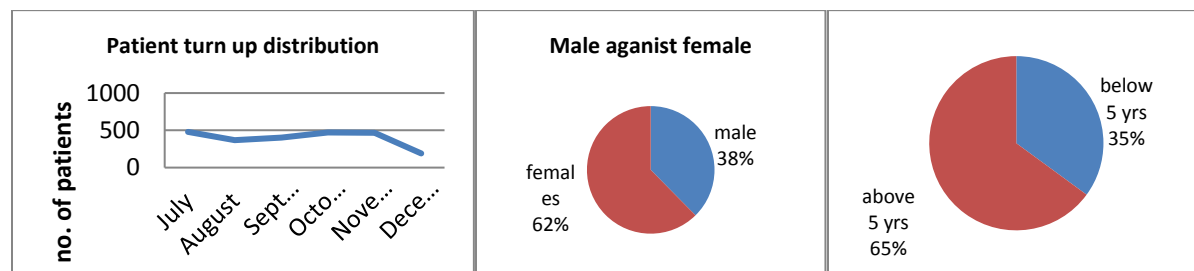
And finally, to Karin Hakansson, the secretary general of the RDS what a great honor and privilege to work with you!

REPORT BY
DANIEL MURUKA
JACINTA KARIMI

1. KWANZA JEEPLINE.

Patients turn up

	July		August		September		October		November		December		total	
	m	f	m	f	m	f	m	f	m	f	m	f	male	females
0-5	104	105	60	68	50	78	79	81	77	79	29	25	399	436
5-14	26	32	22	33	31	37	36	27	22	32	10	11	147	172
14-25	9	27	11	19	16	42	16	24	24	44	6	16	82	172
25-35	9	33	12	34	4	21	15	42	7	37	3	23	50	190
Above 35	15	60	20	40	14	57	23	54	26	61	2	28	100	300
Above 55	21	38	19	31	17	36	25	50	18	42	18	19	118	216
sub total	184	295	144	225	132	271	194	278	174	295	68	122	896	1486
total	479		369		403		472		469		190		2382	



Comments.

- Comparatively we had 10% less patients compared by first half of the year, 48% of the patients seen were below 25 years of age.

CASES DIAGNOSIS

Cases	Total cases	cases	Total cases
Confirmed malaria	86	Malnutrition	132
clinical malaria	0	Ear Infections	43
Pneumonia	50	all other cases	1249
Diarrheas diseases	75	Diabetes	13
Skin diseases/Wounds	421	Hypertension	65
Viral Infection	484	Asthma	11
general body aches	327	Epilepsy	6
Eye Infections	116	Psoriasis	0
TOTAL CASES FOR THE PERIOD			3,078
TOTAL PATIENTS			2,382

AV. DISEASE PER PTS.	1.3
-----------------------------	------------

Comments.

- 15.7% of the total cases diagnosed were Viral infection, followed by 13.7% skin infection. Malnutrition was at 4.2% and hypertension at 2.1%. Confirmed malaria was 2.7% of the total cases.
- More needs to be done about skin related diseases and infections.

Malaria testing

TOTAL TESTED	0-5		5-14		15-24		25-34		35-54		ABOVE 55		TOTALS
	M	F	M	F	M	F	M	F	M	F	M	F	
512	11	27	5	14	4	6	3	5	2	3	1	0	81
SUB %	28.9	71.1	26.3	73.7	40	60	37.5	62.5	40	60	100		
%	46.9%		23.5%		12.3%		9.9%		6.2%		1.2%		15.8%

Comments.

- 70.4% of positive malaria was between the age of 0-14, however age 0-5 years was the more affected. Need to promote malaria prevention strategies on the small children through health education, use of malaria treated bed nets.

HIV TESTING

TOTAL TESTED	0-5		5-14		15-24		25-34		35-54		ABOVE 55		TOTALS
	M	F	M	F	M	F	M	F	M	F	M	F	
291	0	0	0	0	0	2	0	0	0	1	0	0	4
POSITIVE	0	0	0	0	0	2	0	0	0	1	0	0	4
%													1.4%

Antenatal clinics/ family planning.

ANTENATAL CLINIC VISITS	1 ST VISIT	2 ND VISIT	3 RD VISIT	ABOV 4 TH VISIT	TOTALS
	147	134	84	80	445
FAMILY PLANING	DEPO	PILLS	IMPLANTS	STERILIZATION	TOTALS
	351	106	183	0	640

Comments.

- Comparatively, low clients turn in antenatal clinics compared to Jan-June 2018, however there was an increase of 84% of clients using depo provera as method of family, the number using implants also reduced by 27.7% compared to the first six months of the year.

Immunization

BCG	POLIO				PENTA			MEASLES	FIC	
	BP	1	2	3	1	2	3			
125	37	205	220	220	209	212	222	309	236	2009
MOSQUITOR BED NETS										
CHILDREN UNDER 1					0					
PREGNANT MOTHERS					0					

SOLD TO PTS	8
	8

Comments.

- There was a 19.5% improvement on fully immunized child compared to Jan – June 2018.
- Low distribution of Mosquito nets since the government did mass distribution in June 2018.

Jigger treatment

TOTAL TREATED	0-5		5-14		15-24		25-34		35-54		ABOVE 55		TOTALS
	M	F	M	F	M	F	M	F	M	F	M	F	
PEROXIDE USED 55 LTRS	9	6	6	7	1	0	2	0	0	0	1	0	32

Scabies treatment

TOTAL TREATED	0-5		5-14		15-24		25-34		35-54		ABOVE 55		TOTALS
	M	F	M	F	M	F	M	F	M	F	M	F	
BBE USED 15	16	21	10	11	6	9	3	4	1	2	0	0	83

Comments.

- 32 children were treated for jiggers and 83 children were treated for scabies during the public health campaigns.

PLANS 2019.

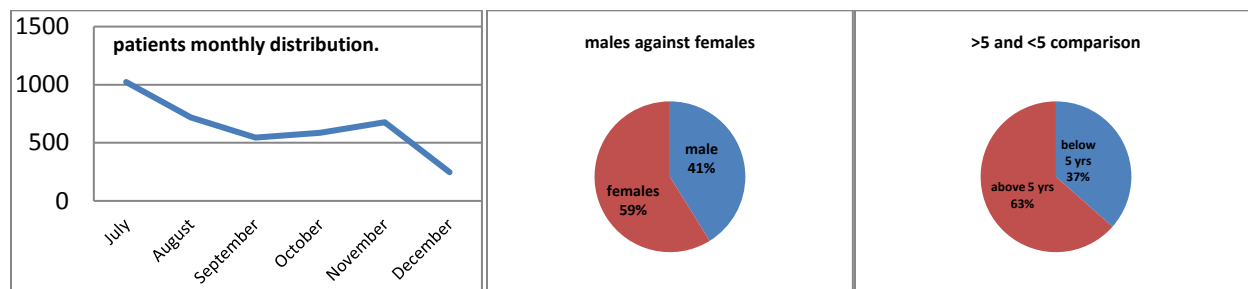
- Three clinics will be handed over in the first period of 2019, these clinics includes: Missanga and Soyminning these two clinics have nurses already and can run on their own.
- Salama, though does not have a nurse but a nurse has been posted in Matunmbei dispensary which is only 2.5km away.
- The new clinics areas have been identified by the SCHMT of Kwanza.

ENDEBESS JEEPLINE

Patients turn up.

	July		August		September		October		November		December		total	
	m	f	m	f	m	f	m	f	m	f	m	f	male	females
0-5	226	212	136	123	104	93	115	87	100	118	36	36	717	669
5-14	112	87	65	66	53	44	48	68	52	59	20	22	350	346
14-25	36	56	26	45	21	45	13	32	13	51	14	19	123	248
25-35	15	66	19	52	7	29	12	43	20	56	13	20	86	266
Above 35	50	96	16	76	22	77	22	76	27	75	13	20	150	420
Above 55	21	46	30	63	14	37	21	49	39	68	12	22	137	285
sub total	460	563	292	425	221	325	231	355	251	427	108	139	1563	2234

total	1023	717	546	586	678	247	3797
--------------	------	-----	-----	-----	-----	-----	-------------



Comments.

- 54.8% of all the total patients seen were below age 24 years, there was however patients increase of 14.5% as compared to Jan – June 2018.

Case Diagnosis

Cases	total	cases	totals
Confirmed malaria	41	Malnutrition	623
clinical malaria	0	Ear Infections	149
Pneumonia	44	all other cases	1681
Diarrheas diseases	253	Diabetes	1
Skin diseases/Wounds	750	Hypertension	51
Viral Infection	1356	Asthma	6
general body aches	456	Epilepsy	2
Eye Infections	109	Psoriasis	0
TOTAL CASES FOR THE PERIOD			5,522
TOTAL PATIENTS			3,797
AV. DISEASE PER PTS.			1.5

Comments.

- 24.5% of the total cases diagnosed was viral infection, however more worrying is a combination of skin diseases, diarrheal diseases and malnutrition forming 29.5%. More significant is the malnutrition and diarrheal cases.

Malaria testing

TOTAL TESTED 640	0-5		5-14		15-24		25-34		35-54		ABOVE 55		TOTALS
	M	F	M	F	M	F	M	F	M	F	M	F	
	POSITIVE	8	4	15	8	2	1	1	0	0	0	0	
SUB %	66.7	33.3	65.2	34.8	66.7	33.3	100						
%	30.8%		59%		7.7%		2.5%						6.1%

Comments.

- Low malaria positivity rate, though high positivity common in the age between 5-14 at 59%.

HIV TESTING

TOTAL TESTED 532	0-5		5-14		15-24		25-34		35-54		ABOVE 55		TOTALS
	M	F	M	F	M	F	M	F	M	F	M	F	
POSITIVE	0	0	0	0	0	3	0	4	0	1	0	0	8
%													1.5%

Antenatal clinics/ family planning.

ANTENATAL CLINIC VISITS	1 ST VISIT	2 ND VISIT	3 RD VISIT	ABOV 4 TH VISIT	TOTALS
	230	223	163	136	752
FAMILY PLANING	DEPO	PILLS	IMPLANTS	STERILIZATION	TOTALS
	454	96	355	0	905

Comments.

- We recorded low Antenatal clinics attendance this quarter than the first half of 2018 (Jan-June 2018) by 8.8%.
- Family planning uptake though increased by 5.9% this period.

Immunization

BCG	POLIO				PENTA			MEASLES	FIC	
	BP	1	2	3	1	2	3			
237	57	325	371	342	324	374	347	463	451	3111
MOSQUITOR BED NETS										
<i>CHILDREN UNDER 1</i>				1						
<i>PREGNANT MOTHERS</i>				0						
<i>SOLD TO PTS</i>				18						
				19						

Comments.

- We registered decrease on fully immunized child by 9.2% this reporting period.
- Low distribution of Mosquito nets since the government did mass distribution in June 2018.

Jigger treatment

TOTAL TREATED	0-5		5-14		15-24		25-34		35-54		ABOVE 55		TOTALS
	M	F	M	F	M	F	M	F	M	F	M	F	
PEROXIDE USED 105 LTRS	5	13	13	13	0	0	2	0	0	0	0	1	47

Scabies treatment

TOTAL TREATED	0-5		5-14		15-24		25-34		35-54		ABOVE 55		TOTALS
	M	F	M	F	M	F	M	F	M	F	M	F	
BBE USED 5	12	11	6	5	0	2	0	0	1	2	0	0	39

Comments.

- We treated 86 cases of both jiggers and Scabies during June – December 2018.

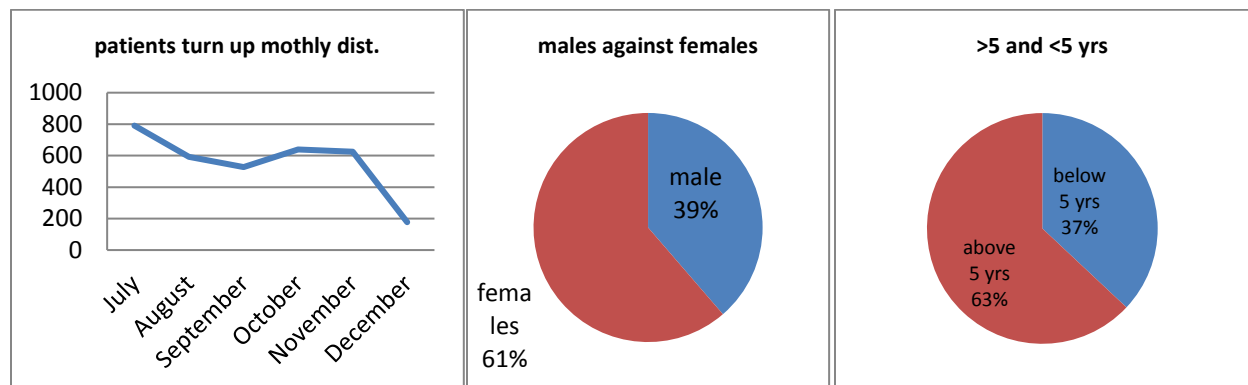
PLANS FOR 2019.

- Continue with the outreach clinics and push for the handover of Zea and Mubere, these are clinics with good facilities up, built by CDF.
- Though three clinics would be difficult to hand over in the near future, there are Mowlem which is the highest clinic in terms of attendance, St. Emanuel which is at the slums 9forkland) and Robison. These are clinics without facilities and therefore the handover process can be difficult it is therefore important to start thinking of strategies to make them sustainable.

MUMIAS JEEPLINE

Patients turn up

	July		August		September		October		November		December		total	
	m	f	m	f	m	f	m	f	m	f	m	f	male	females
0-5	138	150	113	103	105	78	131	110	104	137	32	39	623	617
5-14	73	78	48	55	39	40	57	62	47	67	15	16	279	318
14-25	16	57	16	41	16	31	16	35	11	37	6	5	81	206
25-35	10	45	8	30	6	32	6	38	7	42	4	9	41	196
Above 35	23	99	18	68	25	52	29	50	20	74	6	23	121	366
Above 55	40	62	28	65	31	72	20	85	20	59	12	10	151	353
sub total	300	491	231	362	222	305	259	380	209	416	75	102	1296	2056
total	791		593		527		639		625		177		3352	



Comments.

- Turn up almost same number compared to first quarter, more patients between the age Of 0-24 at 63.4%.

<i>Cases treated</i>	total		
Confirmed malaria	315	Malnutrition	234
clinical malaria	0	Ear Infections	156
Pneumonia	98	all other cases	2065
Diarrheas diseases	85	Diabetes	67
Skin diseases/Wounds	1059	Hypertension	176
Viral Infection	482	Asthma	34
general body aches	150	Epilepsy	15
Eye Infections	137	Psoriasis	0
TOTAL CASES FOR THE PERIOD			5,073
TOTAL PATIENTS			3,352
AV. DISEASE PER PTS.			1.5

Comments.

- Skin related disease (Ulcers, Scabies, fungal etc) still forms the bigger challenges, of total cases diagnosis 20.7% was skin related diseases. Malaria was at 6.2% with viral not as common as in Endebess and Kwanza. Malnutrition was also less common at 4.6%

Malaria testing

TOTAL TESTED 1089	0-5		5-14		15-24		25-34		35-54		ABOVE 55		TOTALS
	M	F	M	F	M	F	M	F	M	F	M	F	
POSITIVE	72	81	39	45	4	9	1	2	5	2	2	0	262
SUB %	47.1	52.9	46.4	53.6	30.8	69.2	33.3	66.7	71.4	28.6	100		
%	58.4%		32.1%		4.9%		1.1%		2.7%		0.8%		24.1%

Comments

- Higher malaria confirmed cases at 24.1% with high prevalence between the age of 0-14 years of age at 90.5%.

HIV TESTING

TOTAL TESTED 387	0-5		5-14		15-24		25-34		35-54		ABOVE 55		TOTALS
	M	F	M	F	M	F	M	F	M	F	M	F	
POSITIVE	0	0	0	0	0	2	0	5	0	9	0	1	17
%													4.5%

Comments.

- We recorded 4.5% positivity out of the total tests done.

Antenatal clinics/ family planning.

ANTENATAL CLINIC VISITS	1 ST VISIT	2 ND VISIT	3 RD VISIT	ABOV 4 TH VISIT	TOTALS
	69	74	52	90	285
FAMILY PLANING	DEPO	PILLS	IMPLANTS	STERILIZATION	TOTALS
	255	15	172	0	442

Comments

- Increased family planning services uptake compared to Jan – June 2018 by 34.8%.

Immunization

BCG	POLIO			PENTA			MEASLES	FIC		
	BP	1	2	3	1	2	3			
14	18	119	131	152	118	127	154	245	227	1305
MOSQUITOR BED NETS										
CHILDREN UNDER 1				0						
PREGNANT MOTHERS				0						
SOLD TO PTS				3						
TOTAL				3						

Comments;

- Increased immunization coverage of fully immunized child compared to Jan–June 2018 by 18.9%
- Low distribution of Mosquito nets since the government did mass distribution in June 2018.

Jigger treatment

TOTAL TREATED	0-5		5-14		15-24		25-34		35-54		ABOVE 55		TOTALS
	M	F	M	F	M	F	M	F	M	F	M	F	
PEROXIDE USED 204 LTRS	27	20	29	25	1	4	3	4	0	3	3	1	120

Scabies treatment

TOTAL TREATED	0-5		5-14		15-24		25-34		35-54		ABOVE 55		TOTALS
	M	F	M	F	M	F	M	F	M	F	M	F	
BBE USED 30.1	83	70	106	77	19	20	15	21	9	17	4	5	446

Comments.

- Total of 566 clients both young and old treated for scabies and jiggers in this quarter.

PLANS FOR 2019.

- The project circle will have ended, with exit of the mobile outreach clinics in the five areas. The clinics exit strategy will be as follows:
 (1) Khandayi – will be taken over by the sub county health team as an outreach clinics for preventive services run by Khalaba dispensary.

- (2) Eubambula – Will also be taken over as an outreach clinic by the SCHMT from Matungu sub county hospital.
- (3) Matmo, Umala gul and lusheya – have all been linked up to nearby dispensaries which are less than 3 km away.

CASES ANALYSIS PER JEEPLINE.

CASES	ENDEBESS	KWANZA	MUMIAS	TOTAL
Confirmed malaria	41	86	315	442
clinical malaria	0	0	0	0
Pneumonia	44	50	98	192
Diarrheas diseases	253	75	85	413
Skin diseases/Wounds	750	421	1059	2230
Viral Infection	1356	484	482	2322
general body aches	456	327	150	933
Eye Infections	109	116	137	362
Ear Infections	149	46	156	351
all other cases	1681	1249	2065	4995
Diabetes	1	13	67	81
Malnutrition	623	132	234	989
Hypertension	51	65	176	292
Asthma	6	11	34	51
Epilepsy	2	6	15	23
Psoriasis	0	0	0	0
total cases	5,522	3,078	5,073	13,673
No. of pts	3,797	2,382	3,352	9,531
Av. Disease per person.	1.5	1.3	1.5	1.4

TOP 5 DISEASES PER JEEPLINE.

	ENDEBESS	KWANZA	MUMIAS
1	VIRAL INFECTION	VIRAL INFECTION	SKIN DISESASES/WOUNDS
2	SKIN DISEASES/WOUNDS	SKIN DISEASES/WOUNDS	VIRAL INFECTION
3	MULNUTRITION	GENRAL BODY PAINS	MALARIA
4	GENERAL BADY ACHES	MULNUTRITON	MULNUTRITION
5	DIARRHEAL DISEASES	EYE DISEASES	HYPERTESION

DENTAL PROJECT IN MATUNGU.

The dental project is a school based program, targeting school children in Matungu sub county. The children get free dental screening and treatment.

Total screening = 6,577

Total cases identified with dental related issues = 790 this is 12% of the total screening.

	extractions		fillings		cleaning		Total	
	m	f	m	f	m	f	male	females
sub total	374	394	7	5	5	5	286	404
total	768		12		10		790	

NORTH POKOT PROJECT.

This a project initiated last year from the beginning of September running to December for the year 2018.

The objective of this project is capacity building in terms medical staff (2 doctors) from abroad working alternate weeks in Kachilliba Sub County Hospital and the 4 selected dispensaries across North Pokot Sub County. While one doctor remains in the Hospital one doctor visits the dispensaries.

SERVICES AT THE HOSPITAL.

- Wards rounds with the hospital team – This is to review patients admitted in the wards and plan for treatment and hospital care.
- Out Patients department – where the doctors work together with the clinicians to offer services to the ambulant patients at the out patients department (OPD)
- Continuous Health Education – This is done by the whole team, the Rotary doctors and the hospital team depending on the CME topics.

SERVICES AT THE DISPENSARY.

- The dispensary in charges schedules patients to be reviewed by the Rotary Doctor who visits the dispensary once in a week.
- Training of the health workers on patient's examination and antibiotics use.
- Preventive services outreach programs for Immunization, Antenatal clinics and Family planning.

Continues Medical Education.

MONTHS	TOPIC	PRESENTER
OCTOBER	RATIONAL DRUGS USE	Dr. Meshack.
	HOSPITAL RECORDS	Records officer . Salome
	HYPERTENSION	Dr. Agneta Rumbom - RDS
	TBA ACTIVE CASE MANAGEMENT	Lawrence Kimosses
	ANTIBIOTIC RESISTANCE	Dr. Agneta Rumbom- RDS
NOVEMBER	GENDER EMPOWERMENT	Emanuel Oigo
	MANAGEMENT OF KALAZAAR	Mark Riongoita - RCO

	MANAGEMENT OF DIARRHOEAL DISEASES	Dr. Bertil Malmodin - RDS
	PREVALENCE OF MALARIA/KALAZAAR/TB AND GE IN KACHILLIBA	Mark Riongoita - RCO
	PAIN MANAGEMENT.	Dr. Ulrika - RDS
	MANAGEMENT OF PRE & ECLAPSA	Mr. Okumu N/O

Antenatal Clinics

ANTENATAL CLINIC VISITS	1 ST VISIT	2 ND VISIT	3 RD VISIT	ABOV 4 TH VISIT	TOTALS
	72	92	52	39	255

Family Planning.

FAMILY PLANING	DEPO	PILLS	IMPLANTS	STERILIZATION	TOTALS
	0	0	0	0	0

Comments.

- Family planning services are not well accepted in this area, men decides when women should give birth.
- We, also attribute lack of family planning clients to problems relating to project starting. The project started late in last year in North Pokot Kachiliba.

Immunization

BCG	POLIO			PENTA			MEASLES	FIC		
	BP	1	2	3	1	2				3
78	24	115	113	206	111	108	108	188	182	1,233

Comments.

- At least we managed to deliver 183 fully immunized child.

SPECIAL PROJECTS..

SHALLOW WELLS.

NO	NAME OF SHALLOW WELLS	SPONSOR	NO. OF. HOUSEHOLD
1	EMKWEN COMMUNITY SHALLOW WELL.	FALKENBERG ROTARY CLUB	106
2	KIMASE COMMUNITY SHALLOW WELL.	AHUS ROTARY CLUB AND WATER FOR ALL	150
3	KAMWANA COMMUNITY SHALLOW WELL.	AHUS ROTARY CLUB AND WATER FOR ALL	153
4	MUKOMARI COMMUNITY SPRING.	ANGELHOLM –RONNE ROTARY CLUB	133
5	EBUBAMBULA COMMUNITY SHALLOW WELL.	FRANSTA ROTARY CLUB	109

6	WERE COMMUNITY SHALLOW WELL.	LERUM ROTARY CLUB	100
7	UMALA GUL TOGO COMMUNITY SHALLOW WELL.	FALKENBERG ROTARY CLUB	205
8	ZEA COMMUNITY SHALLOW WELL.	AHUS ROTARY CLUB AND WATER FOR ALL	162
TOTAL HOUSEHOLD			1,118.

SPRINGS PROTECTIONS.

NO	NAME OS SPRINGS	SPONSORS	NO. OF. HOUSEHOLD
1	RERO COMMUNITY SPRING	TROLLHATTAN ROTARY CLUB, U FOUNDATION 2360	120
2	KOGUTU COMMUNITY SPRING	LJUNGSKILE RC AND U FOUNDATION 2360	50
3	SIWID COMMUNITY SPRING	ENKOPING TROGDEN ROTARY CLUB	78
4	LUNYIKO COMMUNITY SPRING	UDDERVALLA BYFJORDEN ROTARY CLUB, U FOUNDATION 2360	102
5	EBUBAMBULA/OGUTU COMMUNITY SPRING	UDDERVALLA SKANSEN ROTARY CLUB, U FOUNDATION 2360	90
6	NAUTOKOMA COMMUNITY SPRING	FALKENBERG ROTARY CLUB	107
7	ESHIANANI COMMUNITY SPRING	TROLLHATTAN ROTARY CLUB, U FOUNDATION 2360	98
8	GAMA COMMUNITY SPRING	LJUNGSKILE RC AND U FOUNDATION 2360	89
TOTAL HOUSEHOLDS			734

Comments.

- Through the shallow wells and spring protections, the rotary clubs through Rotary doctors has enabled 1,852 households to access clean water.
- This is a marked increase by 73% as compared to the first half of the year.

OTHER ACTIVITIES

TRAININGS.

1. THE VOLUNTEERS.

	MUMIAS	KITALE
1	Community Problem solving process.	Community led total sanitation
2	Communication skills	Advocacy and social mobilization
3	Basic counseling skills for CHVs	Income generating activities
4	Advocacy and social mobilization	Basic counseling
5	Community Dialogue	
6	Community Governance	
7	Community leadership	

2. HEALTH CARE WORKERS TRAINING.

	THEME	TARGET	TOPIC
1	NONE COMMUNICABLE DISEASES TRINING.	TRAINED HEALTH CARE PROVIDERS.	1. DIABETTIS. 2. HYPERTENSION

- | | |
|-----------------------|-----------|
| 1. NURSES. | 3. ASHMA. |
| 2. CLINICAL OFFICERS. | |
| 3. NUTRITIONISTS. | |
| 4. LABTECHNOLOGISTS | |

3. ALL RDS STAFFS.

TOPICS		
1	Internal Control (IC)	6 Rights Based Approach (RBA)
2	Monitoring and Evaluation (M & E)	7 Project Sustainability.
3	Community Let Total Sanitation (CLTS)	8 Protection of the human right.
4	Budgeting	9 Lessons learnt during 2018
5	Brief on the North Pokot Project	10 Impact of CNS/RDS on staffs.

4. REVIEW MEETINGS.

MUMIAS	KITALE	KACHILIBA
1 Exit review meetings volunteers	Clinics quarter review meetings	North Pokot project review meeting
2 Exit Review meetings with the SCHMT		

5. CME TO STAFFS AND VOLUNTEERS.

	MUMIAS	KITALE
1	MANAGEMENT OF DIARRHEA	DIABETES
2	MANAGEMENT OF FEVER	MANAGEMENT OF FEVER
3	TYPHOID FEVER	TYPHOID FEVER
4	SCABIES	SCABIES
5	MULNUTRITION	MULNUTRITION
6	EYE TROUMA	EYE TROUMA
7	BRUCellosis	BRUCellosis
8	CARE OF THE TOOTH AFTER EXTRACTION	HYPERTENSION
9	WOUND CARE	WOUND CARE
10	BACK PAINS.	BACK PAINS.

6. OTHER ACTIVITIES DURING THE PERIOD.

ACTIVITY	
1	SCHOOL HEALTH EDUCATIONPROGRAMS 7 primary sch. 1 sec. school and 1 GSU camp.
2	Open Defecation Free VILLAGE CELEBRATIONS Webanania and Forest Village.
3	SCABIES/JIGGERS COMAIGN. Kitale ndogo primary school and Nalulingo village
4	NEW CLINICS SITES IDENTIFICATION. Four sites identified
5	END YEAR VOLUNTEER MEETINGS All volunteers from all the jeeplines attended.
6	END YEAR STAFFS MEETING In Mombasa all staffs attended.

7. VISIT BY ROTARY CLUBS FROM SWEDEN.

DATES		NO. P	AREAS VISITED.	ACTIVITY VISITED
16-22 TH SEPT	GROUP 1	7	MUMIAS/KITALE	<ul style="list-style-type: none"> - Dental programs. - Jeeplines. - Shallow wells. - Protected springs. - ODF village - Handed over clinics.
11-18 TH NOV	GROUP 2	14	SIAYA/MUMIAS AND KITALE	<ul style="list-style-type: none"> - Dental programs. - Jeeplines. - Shallow wells. - Protected springs. - ODF village - Handed over clinics.

8. 2019 PLANS.

- (i) **MUMIAS JEEPLINE** – The jeepline has been exited and the clinics handed over to the Sub County Health Management Team of Matungu. Some clinics have been linked to existing dispensaries and some will be outreach sites for the preventive services.
- (ii) **HANDING OVER CLINICS** – Three clinics Missanga, Soymining and Salama will be handed over to the Sub County Health Management Team. Nurses have already been posted.
- (iii) **COMMUNITY LED TOTAL SANITATION** – Two village will be triggered and the community trained to embrace taking up activities leading to ODF villages.
- (iv) **TRAININGS** – Training plans for Community Health Volunteers are trained during the first quarter of next project year.

9. PROJECT ACTIVITY LEVEL 2019.

MUMIAS	KITALE	NORTH POKOT
2 SCHOOL MOBILE DENTAL PROGRAMS.	2 JEEPLINE (Endebess/Kwanza)	HOSPITAL MENTORSHIP
SPECIAL PROJECTS	SPECIAL PROJECTS	DISPENSARY SUPPORT
		SPECIAL PROJECTS.

REPORT BY;

DANIEL O MURUKA

JACINTA KARIMI.