

THE ROTARY DOCTORS SWEDEN
ACTIVITY REPORT JAN – JUNE 2016



BY

DANIEL MURUKA

JACINTA K. NICASIO

INTRODUCTION

The Rotary Doctors Sweden (RDS) project in Kenya, has impacted to many communities in the rural Kenya. The project ensures accessibility, community participation and ownership of the community health programs. The objective is to motivate the community into participating in community related health issues, increase community health knowledge to adopt positive health seeking behavior.

The RDS project sends volunteer doctors from Sweden, Netherlands, Finland whose mission are to reach out to patients, in very remote villages, with bad roads through a relay known as the Jeepline, offering curative, Promotive and preventive services with the cooperation of the community and the government.

The RDS medical team of volunteer doctors, local nurses, laboratory technicians, pharmacists reaches out to the community to offer Medical Service to the community. In the outreach clinics the doctor attends to between 35-70 patients with different medical conditions, children with Malaria, Pneumonia, skin diseases, malnutrition etc. Scabies one of the forgotten medical problems unfortunately has resurfaced, with many patients receiving treatment of the case. Our nurses attend to clients seeking services such as family planning, immunization, Antenatal care and health education.

At the moment the RDS has four jeeplines after shutting down Ugunjajeepline in Siaya. All the clinics under Ugunjajeepline were handed over to the government and the community.

Our special project, headed by **Jacinta K. Nicasio** has done tremendous job this period,

we have seen more than 2,645 households spread out through the three jeeplines stations access clean drinking water. This has been enabled by sinking of shallow wells and protection of springs. More than 716 school going children have also benefited from jiggers eradication programs where they also received some shoes.

The program has received good community participation with each clinic having volunteers willing to help, these volunteers receive informal education through the doctors and the RDS staffs visiting the areas.

The various SCHMT (Subcounty Health Management Team) who are our partners on the ground have been a great support, we appreciate your cooperation.

To all the team that have made this possible, thanks for your commitment and effort in making us achieve this. Thanks to the RDS board and International Coordinator Karin Hakansson for all the efforts they put on the project to make it work, to all our office team in Kisumu, to all our staffs in various jeeplines, remember without your effort we would not have achieved this. Thank you so much and lastly to our volunteer doctors, it has been great working together, meeting always in Bungoma to discuss and plan! Thanks for choosing to work for the Kenyan mission with RDS. I believe it gives a lot of satisfaction to know you helped a patients, who need your help at that time.

Thank you all.

DANIEL O MURKA – NATIONAL COORDINATOR

THE RDS PROJECT.

The RDS project covers three main regions in Kenya (Siaya, Mumias and Kitale). The project is further managed in small units called Jeeplines.

Jeeplines teams (headed by a team leaders) are the implementing units of the project, each team is assigned to five mobile clinic sites in the community, visited every week, until sustainability is reached.

	Jeepline	Station	County	Region
1	Ugunja	SIAYA	Siaya	Western Kenya (Nyanza)
2	Matungu	MUMIAS	Kakamega	Western Kenya
3	Mumias		Kakamega	Western Kenya
4	Endebess	KITALE	Trans-Nzoia	Rift valley
5	Kwanza		Trans-Nzoia	Rift Valley

THE STAFFS

NO	STAFFS DESCRIPTION	NATURE	
1	DOCTORS	VOLUNTEERS	19
2	NURSES	EMPLOYED	3
3	NURSES	GOK SECONDED	2
4	LABORATORY TECHNICIANS	EMPLOYED	3
5	HIV COUNCELLORS	EMPLOYED	2
6	DRIVERS	EMPLOYED	2
7	GARDENERS	EMPLOYED	3
8	HOUSE HELP	EMPLOYED	3
9	GUARDS CONTRACTED FROM SECURITY FIRMS		2

SERVICES OFFERED

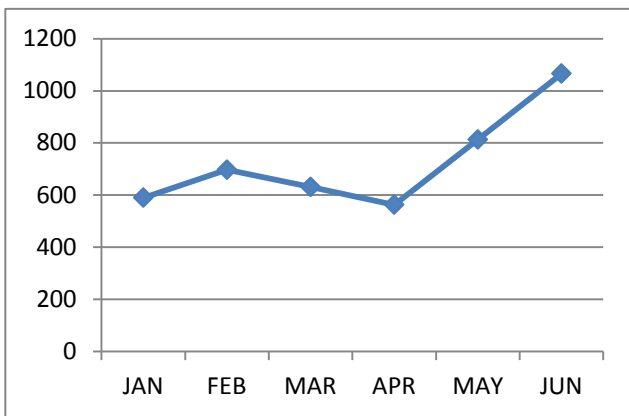
	MOBILE CLINIC PROGRAMS	SPECIAL PROGRAMS	DENTAL PROGRAMS
1	Curatives services	1. Protection of community springs and sinking shallow wells.	1. School screening programs and treatment of identified cases.
2	Preventive services	2. Training and supporting the CHWs.	2. Adults treatment of dental problems.
3	Promotive services.	3. Community jigger's eradication.	3. Preventive dental services.

PATIENTS TURNUP PER JEEPLINE

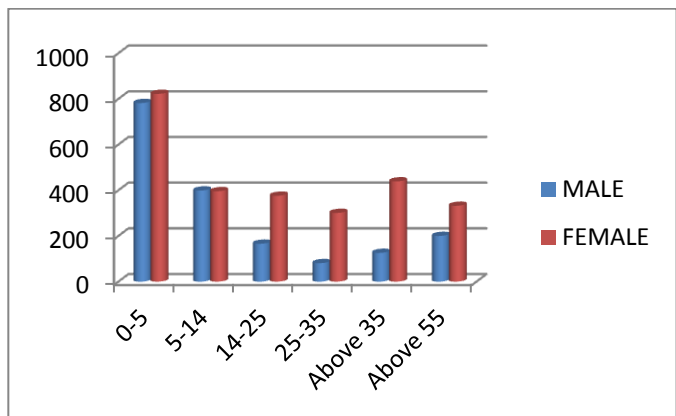
1. MATUNGU JEEPLINE

NO	AGE GROUP	JAN		FEB		MARCH		APR		MAY		JUN		TOTAL	
		M	F	M	F	M	F	M	F	M	F	M	F	M	F
1	0-5 years	100	101	119	118	101	115	112	103	152	161	198	224	782	822
2	5-14 years	35	49	53	64	38	62	51	41	63	87	99	93	399	396
3	14-25 years	26	50	25	64	31	58	21	40	27	68	36	96	166	376
4	25-35 years	13	49	17	48	9	49	10	35	17	48	15	72	81	301
5	Above 35 years	19	62	22	75	15	68	14	58	34	72	22	104	126	439
6	Above 55years	36	50	36	56	32	53	26	52	34	50	36	71	200	332
	SUB TOTAL	229	361	272	425	226	405	234	329	327	486	406	660	1754	2666
	TOTAL	590		697		631		563		813		1066		4420	

MONTHLY PATIENTS DISTRIBUTION



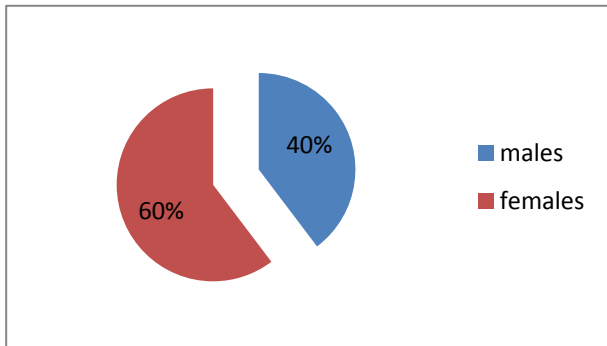
PTS TURN UP BY GENDER/AGE GROUP



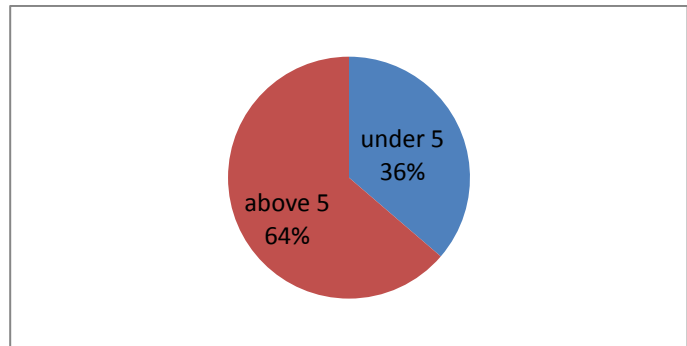
COMMENTS

- Low patients seen in April, with highest number seen in June.
- High female turn up throughout the different age groups, with an exception of age group 5-14 years where we almost had equal numbers.

Patients turn up by sex



Total under 5 years against above five



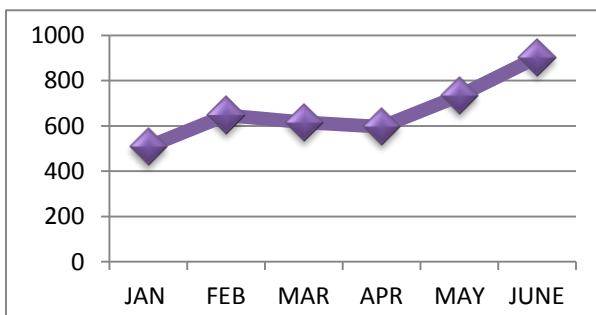
COMMENTS

- High female turn up than males this is because females receive more services at the same time i.e. curative with immunization.
- Above five patients are more than under five as seen.

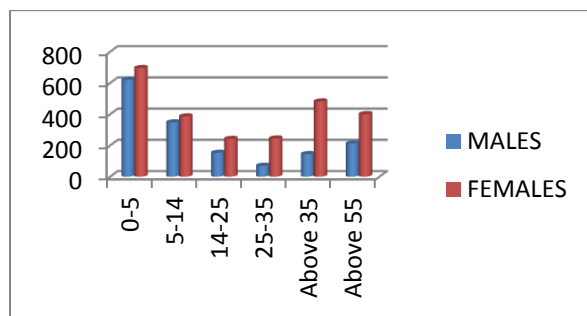
2. MUMIAS JEEPLINE

AGE GROUP	JAN		FEB		MAR		APR		MAY		JUN		TOTAL	
	M	F	M	F	M	F	M	F	M	F	M	F	M	F
0-5 yrs	71	75	88	109	90	107	107	120	134	137	130	148	620	696
5-14 yrs	36	44	48	62	63	59	46	45	65	76	90	100	348	386
14-25 yrs	15	30	30	38	21	33	24	52	26	19	37	70	153	242
25-35 yrs	8	33	11	31	10	32	9	41	16	60	16	48	70	245
Above 35 yrs	31	73	27	89	19	76	16	63	26	82	26	99	145	482
Above 55 yrs	38	54	35	78	41	64	26	47	29	63	43	95	212	401
sub total	199	309	239	407	244	371	228	368	296	437	342	560	1548	2452
total	508		646		615		596		733		902		4000	

MONTHLY PATIENT DISTRIBUTION



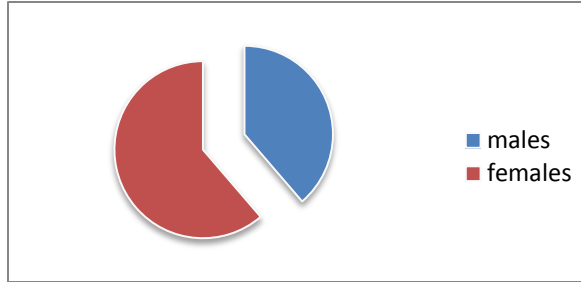
PTS TURN UP BY GENDER/AG



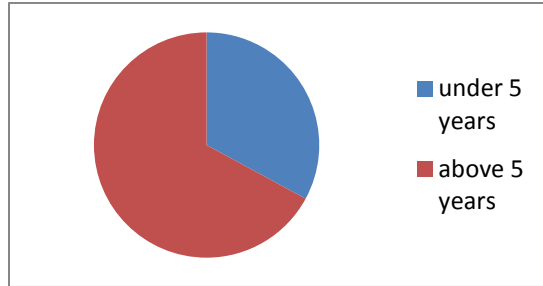
COMMENTS

- January had the lowest turn up of patient with a progressive increase till June.
- High female turn up throughout the age groups.

Patients turn up by sex



Total under 5 against above 5



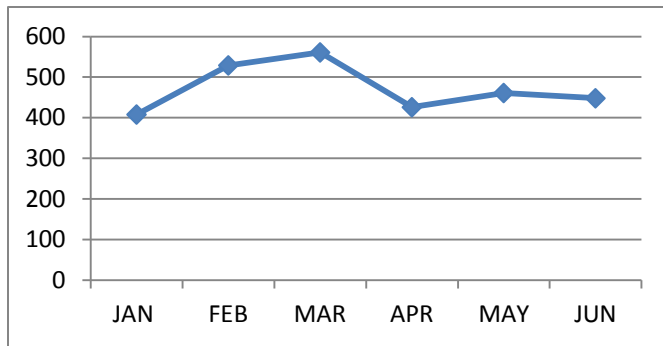
COMMENTS

- More female patients in total.
- More above five patients seen than under five.

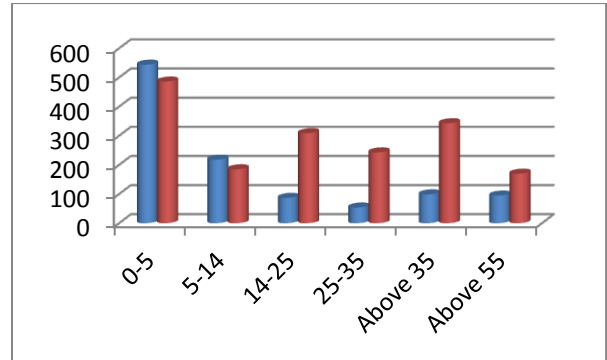
3. ENDEBEES JEEPLINE

	JAN		FEB		MAR		APR		MAY		JUN		TOTAL	
AGE GROUP	M	F	M	F	M	F	M	F	M	F	M	F	M	F
0-5	83	71	100	91	110	102	86	81	80	58	85	83	544	486
5-14	23	34	39	35	39	35	37	15	34	38	46	28	218	185
14-25	14	39	9	61	20	58	9	50	20	52	15	49	87	309
25-35	8	46	13	45	5	41	12	35	9	40	7	36	54	243
Above 35 yrs	15	44	16	71	25	59	11	48	15	69	17	52	99	343
Above 55 yrs	12	19	22	27	22	45	14	28	14	32	11	19	95	170
sub total	155	253	199	330	221	340	169	257	172	289	181	267	1097	1736
total	408		529		561		426		461		448		2833	

MONTHLY PATIENTS' DISTRIBUTION



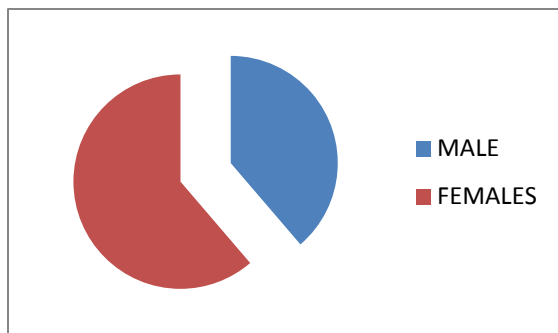
PTS TURN UP IN DIFEREN AGE GROUPS



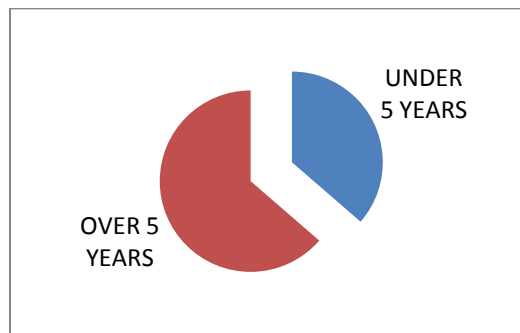
COMMENTS

- March had the highest patient turn up and January having the lowest.
- More females were seen throughout the age groups.

PATIENTS TURN UP BY SEX



TOTAL UNDER FIVE AGAINST OVER FIVE



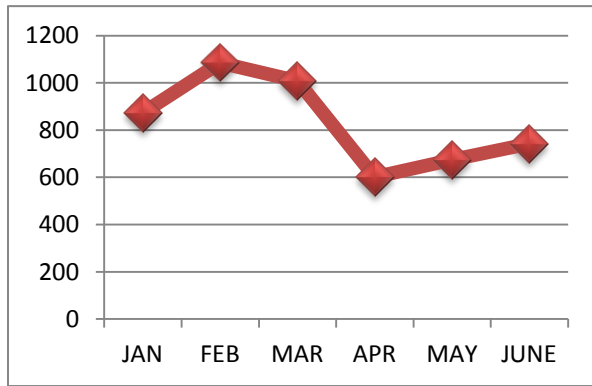
COMMENTS

- Male turn up is almost a quarter of total patients seen.
- Over a third of patients seen are under 5 years

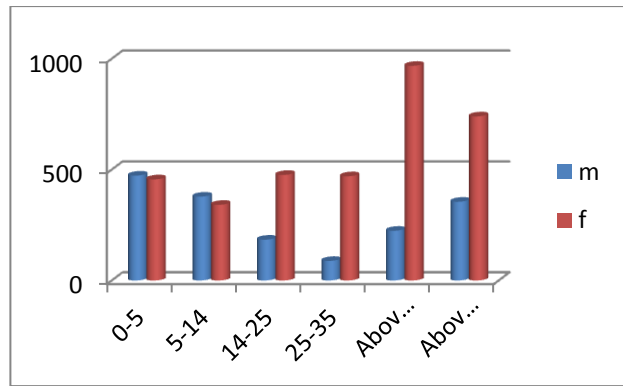
4. KWANZA JEEPLINE

AGE GROUP	JAN		FEB		MAR		APR		MAY		JUN		TOTAL	
	M	F	M	F	M	F	M	F	M	F	M	F	M	F
0-5yrs	59	72	84	76	103	81	78	75	54	71	95	81	473	456
5-14yrs	52	47	60	58	69	69	53	46	69	56	75	65	378	341
14-25yrs	21	81	32	101	38	93	30	68	35	72	28	61	184	476
25-35yrs	19	76	13	103	19	78	13	79	11	62	13	72	88	470
Above 35yrs	42	196	42	243	37	200	34	126	35	108	34	95	224	968
Above 55 yrs	62	146	78	195	75	146	68	101	31	70	41	82	355	740
sub total	255	618	309	776	341	667	276	495	235	439	286	456	1702	3451
total	873		1085		1008		602		674		742		5153	

MONTHLY PATIENTS DISTRIBUTION



PTS TURN UP IN DIFFERENT AGE GROUPS

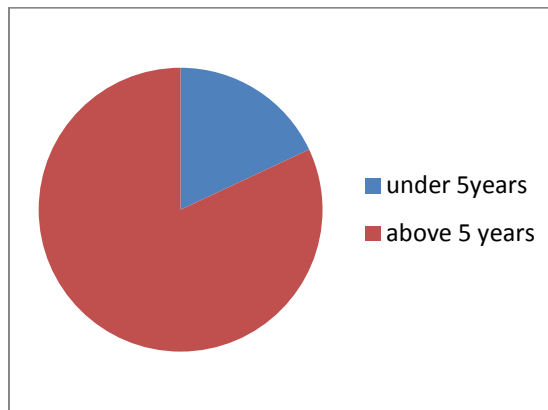
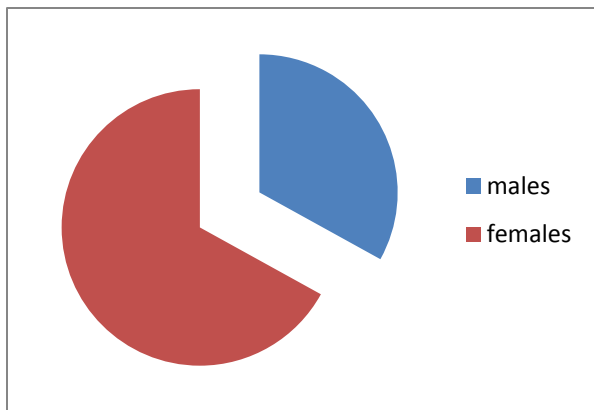


COMMENTS

- There is an increase in February and March then a progressive decrease till April where again it rises.
- High female turn ups than male patients except in the age group between 0-5yrs.

PATIENTS TURN UP BY SEX

TOTAL UNDER FIVE AGAINST ABOVE FIVE YEARS



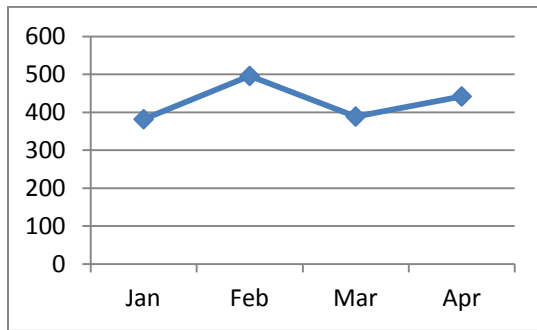
COMMENTS

- Below five years patients are a quarter of total patients treated.
- The number of female patients is higher than male patients.

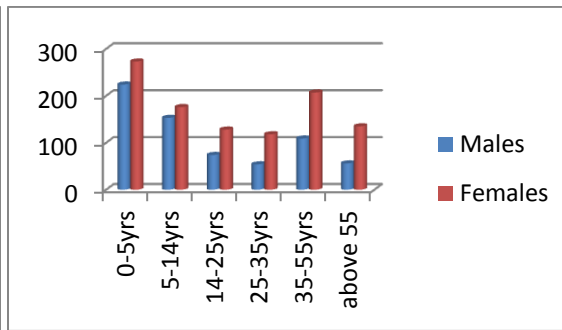
4. UGUNJA JEEPLINE

AGE GROUP	JAN		FEB		MAR		APR		TOTAL	
	M	F	M	F	M	F	M	F	M	F
0-5yrs	53	64	74	89	44	53	53	69	224	273
5-14yrs	46	34	45	57	29	37	33	48	153	176
14-25yrs	15	28	24	35	16	29	19	36	74	128
25-35yrs	10	15	22	25	11	33	11	45	54	118
Above 35yrs	20	47	33	47	29	56	27	57	109	207
Above 55 yrs	13	37	12	33	19	33	12	32	56	135
sub total	157	225	210	286	148	241	155	287	670	1,039
total	382		496		389		442		1,709	

MONTHLY PATIENTS DISTRIBUTION



PTS TURN UP IN DIFFERENT AGE GROUPS

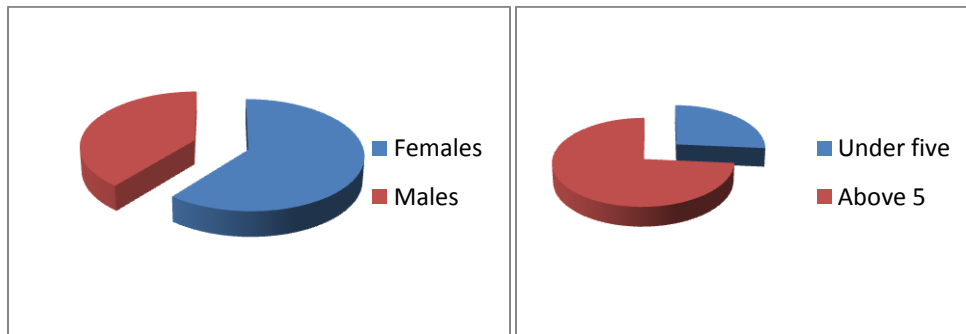


COMMENTS

- More patients reported in February and as usual more females seen than males!
- This jeepline has been terminated and all the clinics attached to government dispensaries.

PATIENTS TURN UP BY SEX

TOTAL UNDER FIVE AGAINST ABOVE FIVE YEARS



COMMENTS

- More females seen than males and more above five seen than adults.

CASES.

DISEASES BY JEEPLINE

		MUMIAS	KWANZA	MATUNGU	UGUNJA	ENDEBESS
1	CONFIRMED MALARIA	2,365	151	973	491	65
2	CLINICAL MALARIA	11	13	129	13	32
3	PNEUMONIA	203	212	367	20	124
4	DIARRHEAL DISEASES	45	167	155	24	219
5	SKIN DISEASES/WOUNDS	908	973	1178	454	557
6	VIRAL INFECTION	297	544	414	252	474
7	ANAEMIA	142	191	264	145	182
8	EYE INFECTION	207	260	178	165	93
9	EAR INFECTION	203	292	211	99	92
10	ASTHMA	126	197	123	38	168
11	DIABETIS	112	213	143	74	120
12	HYPERTENSION	107	94	67	17	150
13	GENERAL BODY ACHES	291	1637	645	37	656
14	ALL OTHER CASES	223	1289	707	243	476
	TOTAL CASES	5,240	6,233	5,554	2,072	3,408
	TOTAL PATS	4,000	5,153	4,420	1,709	2,833
	CASE PER PATIENT	1.31	1.2	1.26	1.21	1.2

COMMENTS

- More confirmed malaria cases in Mumias jeepline and Matungu , less malaria in Kwanza and Endebess, no malaria in Kisima.

TOP FIVE PER JEEPLINE.

	MUMIAS	KWANZA	MATUNGU	UGUNJA	ENDEBESS
1	MALARIA	G P	SKIN D/W	MALARIA	GBP
2	SKIN D/W	SKIN INF	MALARIA	SKIN D/W	SKIN INF
3	VIRAL INF.	VIRAL	GBP	VIRAL	VIRAL
4	SKIN INF.	EYE INF.	VIRAL INFECTION	EYE INF	DIARRHEA
5	EYE INFECTION	EAR INF.	PNEUMONIA	ANAEMIA	ANAEMIA

KEY: SKIN D/W = Skin Diseases/Wounds. GBP = General Body Pain

HIV TESTING

		GENDER	MATUNGU	MUMIAS	KWANZA	ENDEBESS	UGUNJA	TOTAL +VE	
TOTAL TESTED			212	98	603	634	312		
	0-5years	M	0	0	0	1	2	1	
		F	0	0	1	0	5	1	
	5-14 years	M	0	1	0	1	0	2	
		F	0	1	0	0	0	1	
	14-25 years	M	0	0	2	0	4	2	
		F	1	0	5	3	7	9	
	25-35 years	M	1	2	1	0	4	4	
		F	2	3	7	6	9	18	
	Above 35 years	M	0	1	3	0	4	4	
		F	0	2	2	5	6	9	
	Above 55 years	M	1	1	1	0	2	3	
		F	0	0	0	1	7	1	
	TOTAL POSITIVE			5	11	22	17	50	105
	%VE			2.40%	11.20%	3.60%	2.70%	16.02%	5.65%

COMMENTS

- Highest positivity seen in Ugunjajeepline followed by Mumias.
- Highest positivity is the age group between 25-35 years.

PREVENTIVE SERVICES

ANTENATAL CLINICS	JEEPLINE	1ST VISIT	2ND VISIT	3RD VISITS	ABOVE 4TH VISITS
	MATUNGU		129	134	82
ENDEBESS		306	223	126	62
KWANZA		145	114	66	58
MUMIAS		30	25	25	31
UGUNJA		87	67	45	12
TOTAL		697	563	344	238

COMMENTS

- Endebessjeepline leads in Antenatal clinics, the highest turn up is in first visit. Above 4th visit has the least turn up.

FAMILY PLANNING

FAMILY PLANNING	JEEPLINE	DEPO	PILLS	IMPLANTS	STERILIZATION	
	MATUNGU	659	7	37	0	703
	ENDEBESS	982	76	157	0	1215
	KWANZA	401	50	186	0	637
	MUMIAS	201	19	1	0	221
	UGUNJA	307	21	6	0	334
	TOTAL	2550	173	387	0	3,110

COMMENTS.

- Endebesjeepline is leading in Family planning, depoprovera injection is the most commonly used method of family planning, this is followed by implants. Mumias jeepline performs poorly in family planning.

IMMUNIZATIONS

IMMUNIZATION	JEEPLINE	BCG		POLIO			PENTAVALENT			MEASELES	FIC	TOTALS
		BP	1	2	3	1	2	3				
MATUNGU	24	17	95	130	156	99	131	161	280	276	1369	
ENDEBESS	346	16	353	326	357	368	344	341	373	365	3189	
KWANZA	137	34	163	157	136	176	172	212	185	190	1562	
MUMIAS	0	14	54	66	89	54	66	89	119	119	670	
UGUNJA	51	23	145	138	127	147	137	109	170	173	1220	
TOTAL	558	104	810	817	865	844	850	912	1127	1123	8010	

COMMENTS.

- Endebessjeepline leads in immunization, followed by Matungu.

NONE COMMUNICABLE DISEASES.

- This is a program initiated in May in Kwanza jeepline only. The program target patients with chronic illnesses.
- During the two months the patients diagnosed for chronic illness were as follows:

MONTHS	DIABETIS	HYPERTENSION	ASHMA	EPILEPSY	PSORIASIS	GBP
MAY	5	35	1	1	1	21
JUNE	8	20	1	0	0	16
TOTALS	13	55	2	1	1	37

MOSQUITO NETS DISTRIBUTION

NETS	JEEPLINE	ANTI NATAL CARE	PATIENTS NETS	SOLD NETS	CHILD WELFARE CLINIC NETS	totals
	MATUNGU	163	14	25	124	326
	ENDEBESS	117	9	0	82	208
	KWANZA	0	2	1	20	23
	MUMIAS	69	17	12	112	210
	UGUNJA	44	45	23	79	191
	TOTAL	393	87	61	417	958

MALARIA TESTS

		MUMIAS	KWANZA	ENDEBESS	MATUNGU	UGUNJA	TOTAL +VE
TOTAL TESTED		4017	1149	750	2254	748	9,317
0-5YEARS	MALE	569	24	9	310	125	1037
	FEMALE	581	15	14	288	136	1034
5-14YEARS	MALES	305	36	15	89	42	487
	FEMALES	354	17	6	135	54	566
14-25YEARS	MALES	98	3	2	19	19	141
	FEMALES	116	17	8	62	22	225
25-35YEARS	MALES	36	2	2	5	25	70
	FEMALES	46	12	4	21	26	109
35-55YEARS	MALES	52	5	2	7	14	80
	FEMALES	89	12	2	24	17	144
ABOVE 55YEARS	MALES	26	1	0	4	8	39
	FEMALES	93	7	1	9	3	113
TOTALS +VE		2,365	151	65	973	491	4,044
%+ve		RDT	BS	BS	BS	RDT	
Test method		58.9%	13.1%	8.7%	43.2%	65.6%	43.4%

COMMENTS

- Ugunja and MumiasJeeplines have the highest positivity rate, it is also important to note that the two jeepline use RDT as methods of malaria diagnosis.
- Endebess and Kwanza have the lowest malaria prevalence.

SUMMARY

1	Total number of volunteers doctors			19
2	Average population served by the RDS doctors	average	6,000 per clinic	150,000
3	Total patients	Under five	5,376	29.7%
		Above 5	12,739	70.3%
4	UNDER 14 YEARS PATIENTS/CLIENTS FLOW IN THE CLINICS	UNDER 5	5,376	52.7%
		5-14YERS	2,980	
		IMMUNIZATION	8,010	
		TOTALS	16,366	
5	ABOVE 14 YEARS PATIENTS/CLIENTS FLOW IN THE CLINICS	PATIENTS >14YRS	9,759	47.3%
		ANC	1,842	
		F/P	3,110	
		TOTALS	14,711	
6	Total Cases.			
7	Total NDCs cases		109	
8	Total nets distributed.		958	
9	SPECIAL PROJECTS	SPRINGS PROTECTED	9	
		SHALLOW WELL	4	
		SHALLOW WELL REPAIRED	2	
		TOTAL POPULATION ACCESSING CLEAN WATER		13,225
		Total Children RX for jiggers		716
13	Total clinics handed over to the community/government (UGUNJA JEEPLINE)			4